

# 6FM80 12V 80Ah(20hr)

The rechargeable batteries are lead-lead dioxide systems. The dilute sulfuric acid electrolyte is absorbed by separators and plates and thus immobilized. Should the battery be accidentally overcharged producing hydrogen and oxygen, special one-way valves allow the gases to escape thus avoiding excessive pressure build-up. Otherwise, the battery is completely sealed and is, therefore, maintenance-free, leak proof and usable in any position.



## Battery Construction

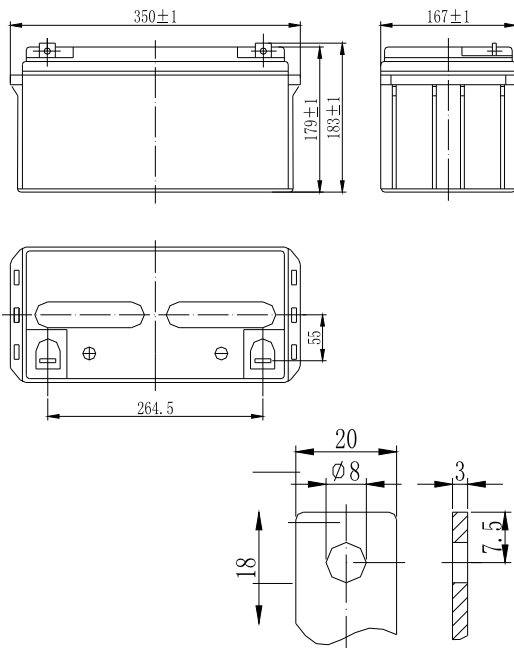
Component	Positive plate	Negative plate	Container	Cover	Safety valve	Terminal	Separator	Electrolyte
Raw material	Lead dioxide	Lead	ABS	ABS	Rubber	Copper	Fiberglass	Sulfuric acid

## General Features

- Absorbent Glass Mat (AGM) technology for efficient gas recombination of up to 99% and freedom from electrolyte maintenance or water adding.
- Not restricted for air transport-complies with IATA/ICAO Special Provision A67.
- UL-recognized component.
- Can be mounted in any orientation.
- Computer designed lead, calcium tin alloy grid for high power density.
- Long service life, float or cyclic applications.
- Maintenance-free operation.
- Low self discharge.

## Dimensions and Weight

Length(mm / inch).....350 / 13.78  
 Width(mm / inch).....167 / 6.57  
 Height(mm / inch).....179 / 7.05  
 Total Height(mm / inch).....183 / 7.20  
 Approx. Weight(Kg / lbs).....24 / 52.9



## Performance Characteristics

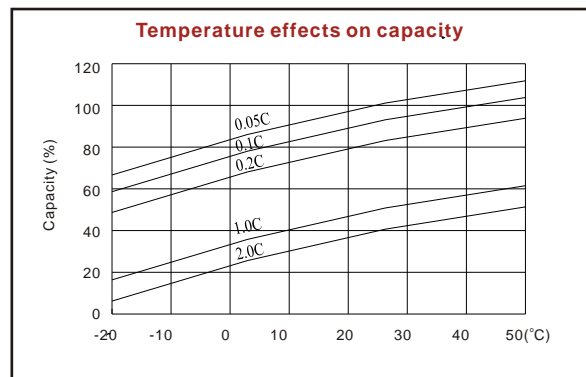
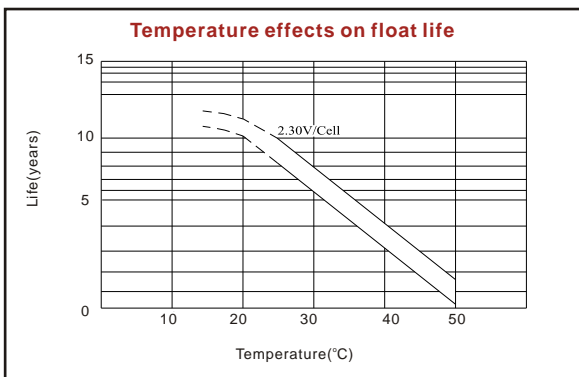
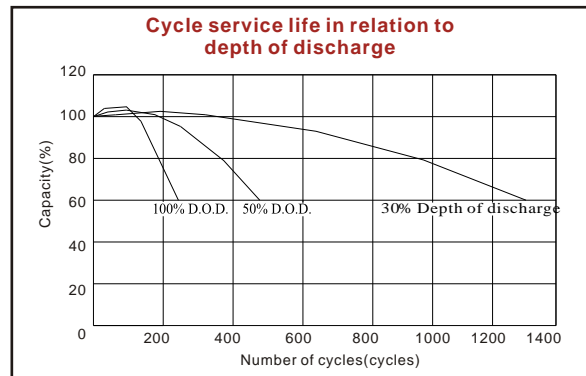
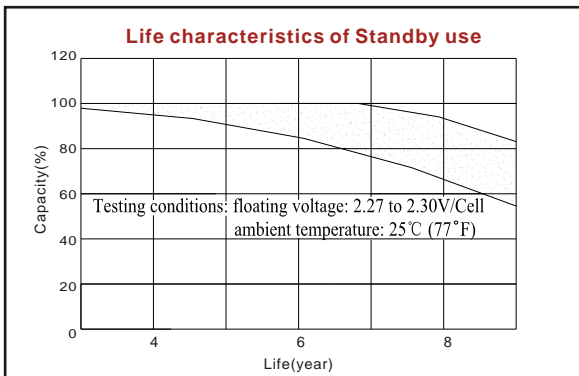
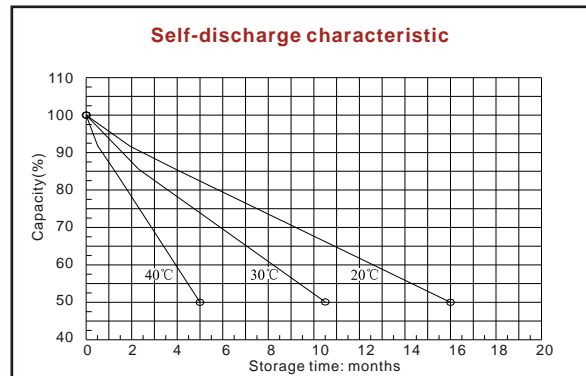
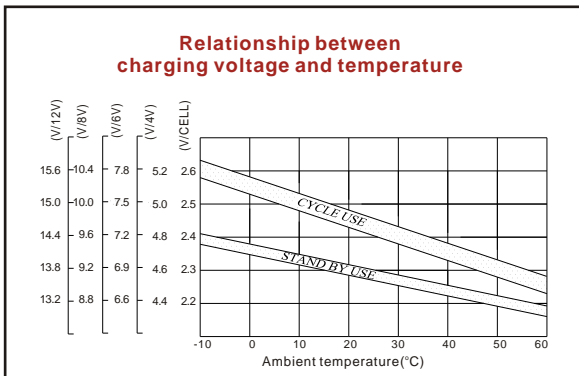
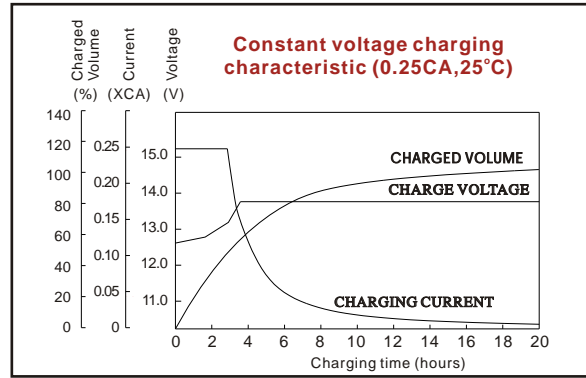
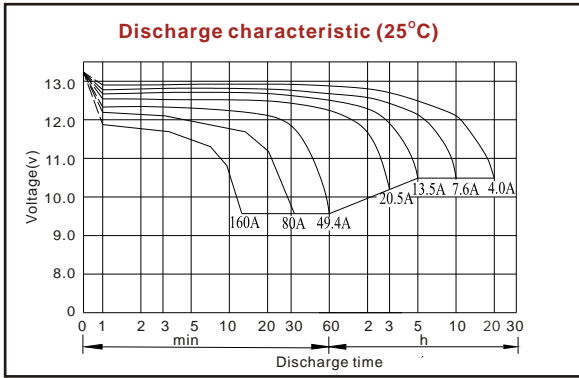
Nominal Voltage .....12V  
 Number of cell .....6  
 Design Life .....10 years  
 Nominal Capacity 77°F(25°C)  
     20 hour rate (4A, 10.5V)..... 80Ah  
     10 hour rate (7.6A, 10.5V)..... 76Ah  
     5 hour rate (13.5A, 10.5V)..... 67.5Ah  
     1 hour rate (49.4A, 9.6V)..... 49.4Ah  
 Internal Resistance  
     Fully Charged battery 77°F(25°C)..... 5.5mOhms  
 Self-Discharge  
     3% of capacity declined per month at 20°C(average)  
 Operating Temperature Range  
     Discharge ..... -20~60°C  
     Charge ..... -10~60°C  
     Storage ..... -20~60°C  
 Max. Discharge Current 77°F(25°C) ..... 750A(5s)  
 Short Circuit Current ..... 1900A  
 Charge Methods: Constant Voltage Charge 77°F(25°C)  
     Cycle use ..... 14.4-14.7V  
     Maximum charging current ..... 24A  
     Temperature compensation ..... -30mV/°C  
     Standby use ..... 13.6-13.8V  
     Temperature compensation ..... -20mV/°C

## Discharge Constant Current (Amperes at 77°F25°C)

End Point Volts/Cell	5min	10min	15min	30min	1h	3h	5h	10h	20h
1.60V	247	188	143	85.7	49.4	21.3	14.1	7.75	4.05
1.65V	233	178	137	83.0	48.6	20.9	13.9	7.70	4.05
1.70V	218	168	132	80.3	47.8	20.5	13.7	7.65	4.05
1.75V	204	159	126	77.6	47.1	20.1	13.5	7.60	4.00
1.80V	190	149	118	75.0	46.3	19.6	13.3	7.41	3.94

## Discharge Constant Power (Watts at 77°F25°C)

End Point Volts/Cell	5min	10min	15min	30min	45min	1h	2h	3h	5h
1.60V	433	323	274	156	122	100	56.0	40.8	27.9
1.65V	411	311	260	154	120	97.8	54.9	37.9	27.4
1.70V	390	299	246	151	117	96.0	53.9	37.2	27.0
1.75V	368	287	232	149	114	94.1	52.9	36.5	26.4
1.80V	347	275	218	146	111	92.3	52.0	35.8	25.8



ISO9001:2000

MH25860

G4M19906-9202-E-16

[www.vision-batt.com](http://www.vision-batt.com)

**Shenzhen Center Power Tech. Co., Ltd.**  
 RM 1801, 18/F, Cangsong Bldg., Terra 6 Rd, Chegongmiao, Futian District, Shenzhen 518040 China  
 Tel: (+86-755) 8343 5688 Fax: (+86-755) 8384 9585 E-mail: sales@vision-batt.com